



**Presentation to Belfast City Council
City Growth & Regeneration Committee**

Thursday 3 December 2015



About SONI

- Ensure the safe, secure, efficient and reliable operation of the high voltage electricity system in NI
- Overseen by the Utility Regulator
- Major investment in newly refurbished HQ in Castlereagh
- 130 employees
- Undertake STEM initiatives across NI and provide graduate and placement programmes



Our Role



Generation



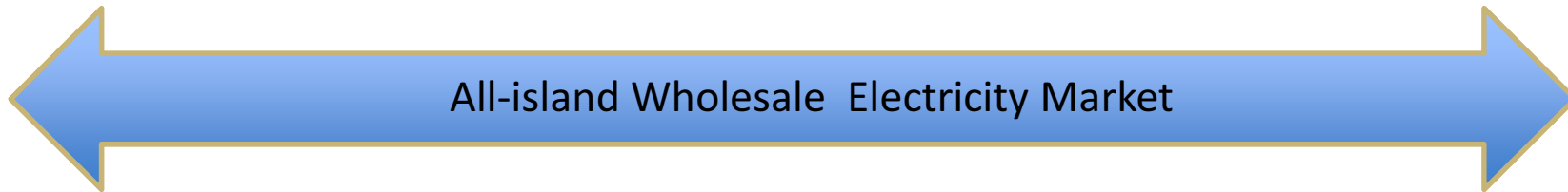
Transmission



Distribution



Customers

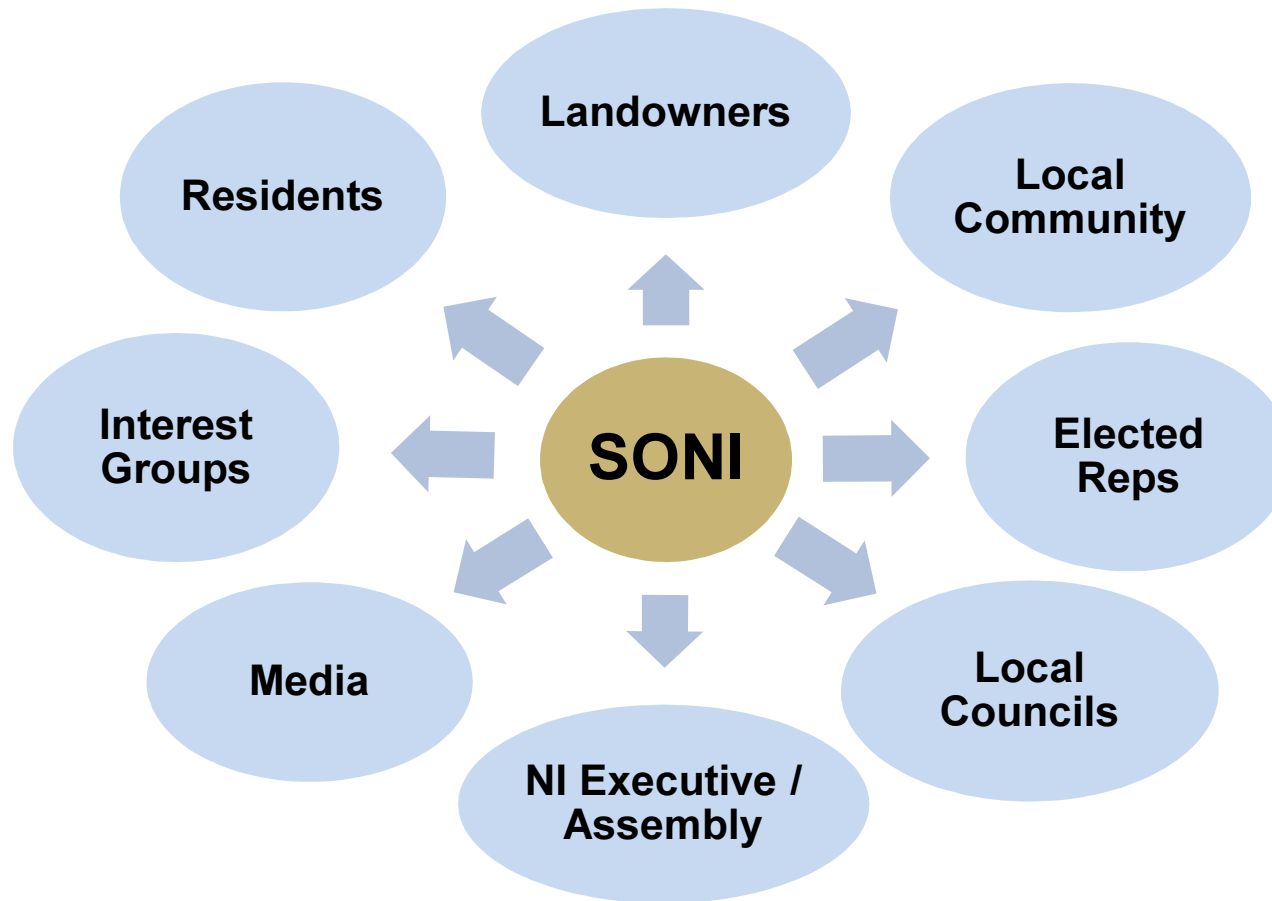




Engaging with Stakeholders



Stakeholder Engagement



How We Engage

- Direct engagement with landowners from an early stage
- Extensive engagement with elected reps and Councils
- Publicly advertised consultation events along proposed routes
- Information brochures produced for each project

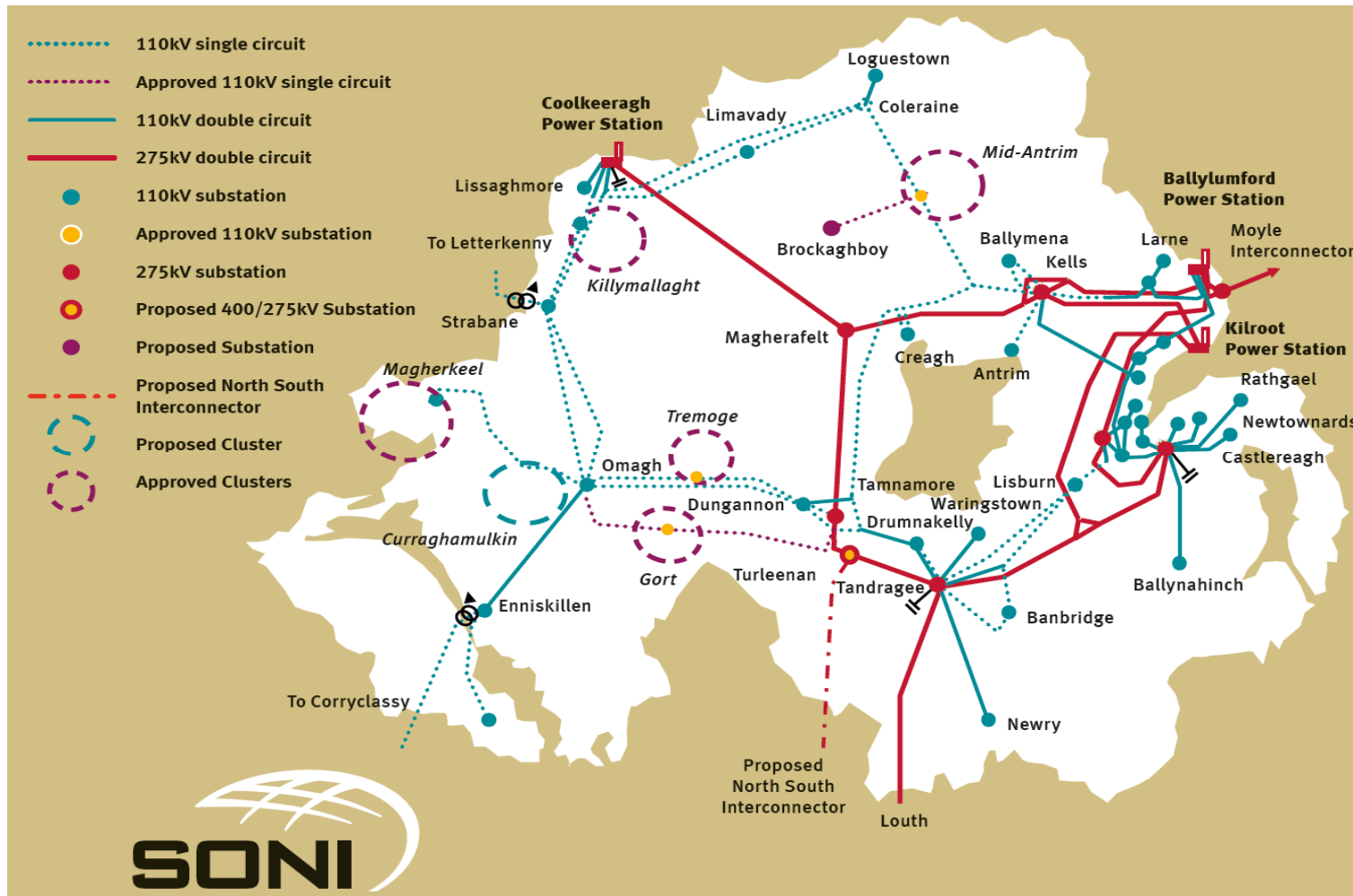




Current & Future Projects in the Belfast City Council Area



NI Transmission System

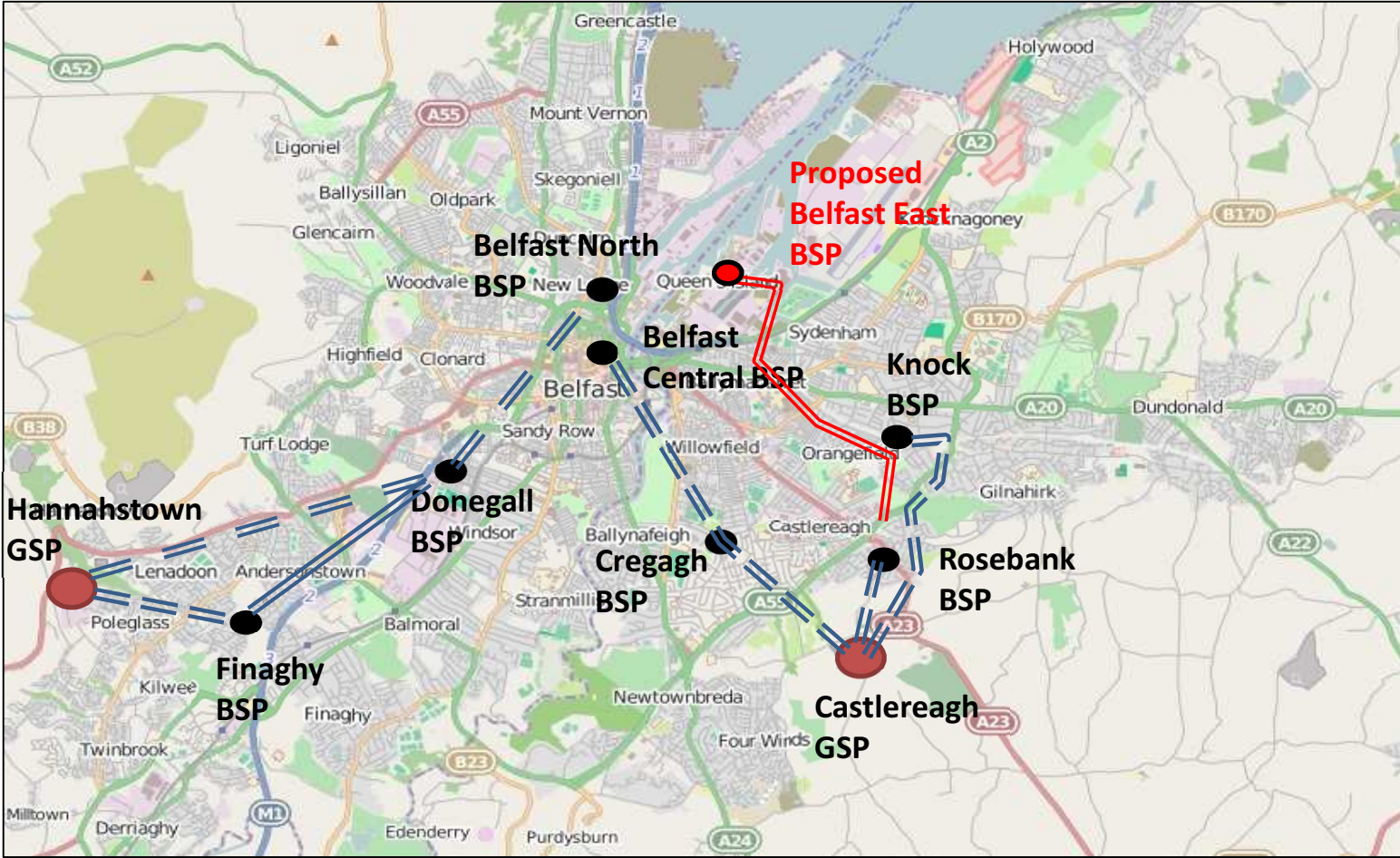


High Voltage Projects in BCC Area

- £12 million investment for local reinforcement
- **Rosebank –Castlereagh 110 kV line**
 - Approx. 2km of new UGC.
 - Currently under construction
- **Titanic Quarter**
 - New 110kV/33kV substation
 - Rosebank to Airport road connection



High Voltage Network for Greater Belfast Area



110kV cable circuit (duplicate)



110kV double circuit towerline



Future Development Plans

- SONI develops 10 year Forecast Development Statements which define future network extension and infrastructure requirements
- Also required under EU legislation to deliver a biennial Ten-Year Network Development Plan
- Effective engagement with Belfast City Council is essential to ensure these plans are considered in the Council's Local Development Plan
- Timely and well-planned development of new network infrastructure is crucial to SONI fulfilling its responsibility to ensure the safe, secure and efficient supply of electricity throughout the Belfast City Council area



An aerial photograph of a 400kV power line tower in a forested valley. The tower is a large, lattice-structured steel structure with multiple cross-arms. It is surrounded by lush green fields and dense forests with some autumn-colored trees. In the background, rolling hills and mountains are visible under a blue sky with light clouds. The text "400kV North South Interconnector" is overlaid in white on the lower part of the image.

400kV North South Interconnector



What is Being Proposed

- North South Interconnector (NSI) - joint project between SONI and EirGrid
- 400kV overhead line will link the electricity networks in NI and ROI
- Key facts about the proposal:

c. £204m total capital investment

1 new substation in NI at Turleenan, Co. Tyrone

34km in NI - 138km along the entire route

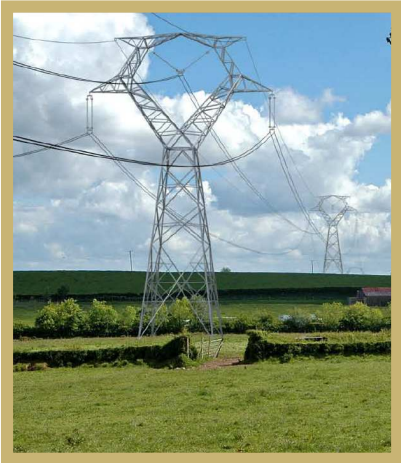
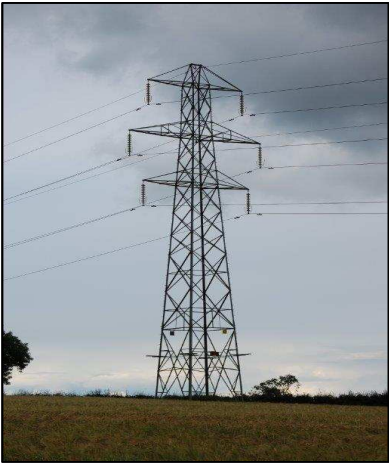
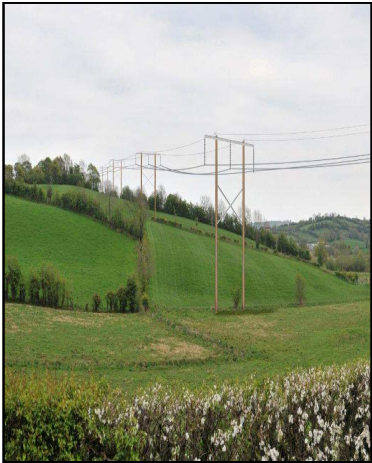
102 new pylons in NI - 401 along the entire route

170 landowners in NI – 626 along the entire route

Crosses counties **Tyrone, Armagh**, Monaghan, Cavan & Meath



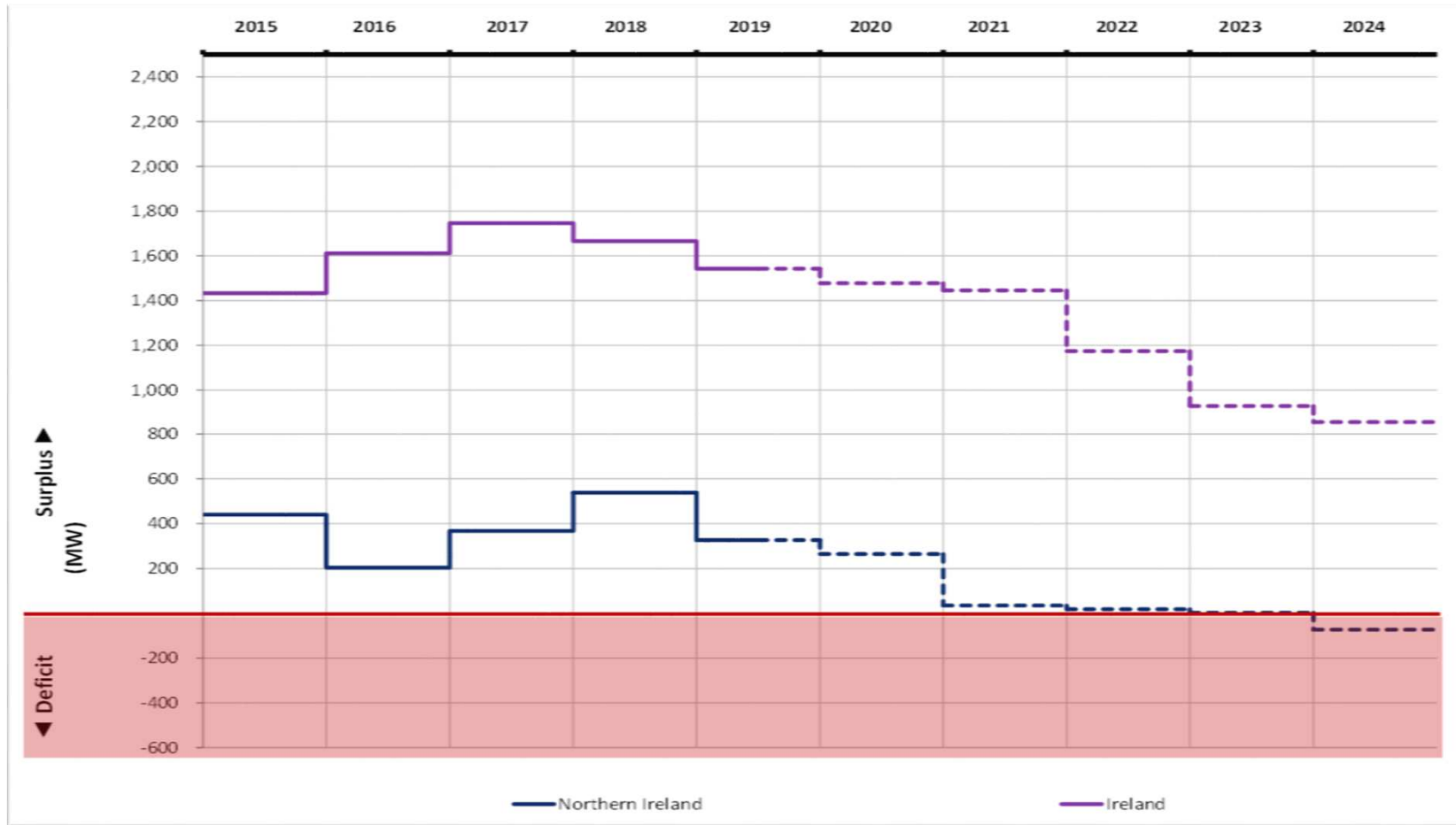
Examples of High Voltage Tower Structures



Tower	110kV	110kV DC	275kV	400kV (NSI)
Height	14-24m	30-45m	45-60m	22-43m
Clearance	7m	9m	8.4m	9m
Span	150m	200m	300m	350m



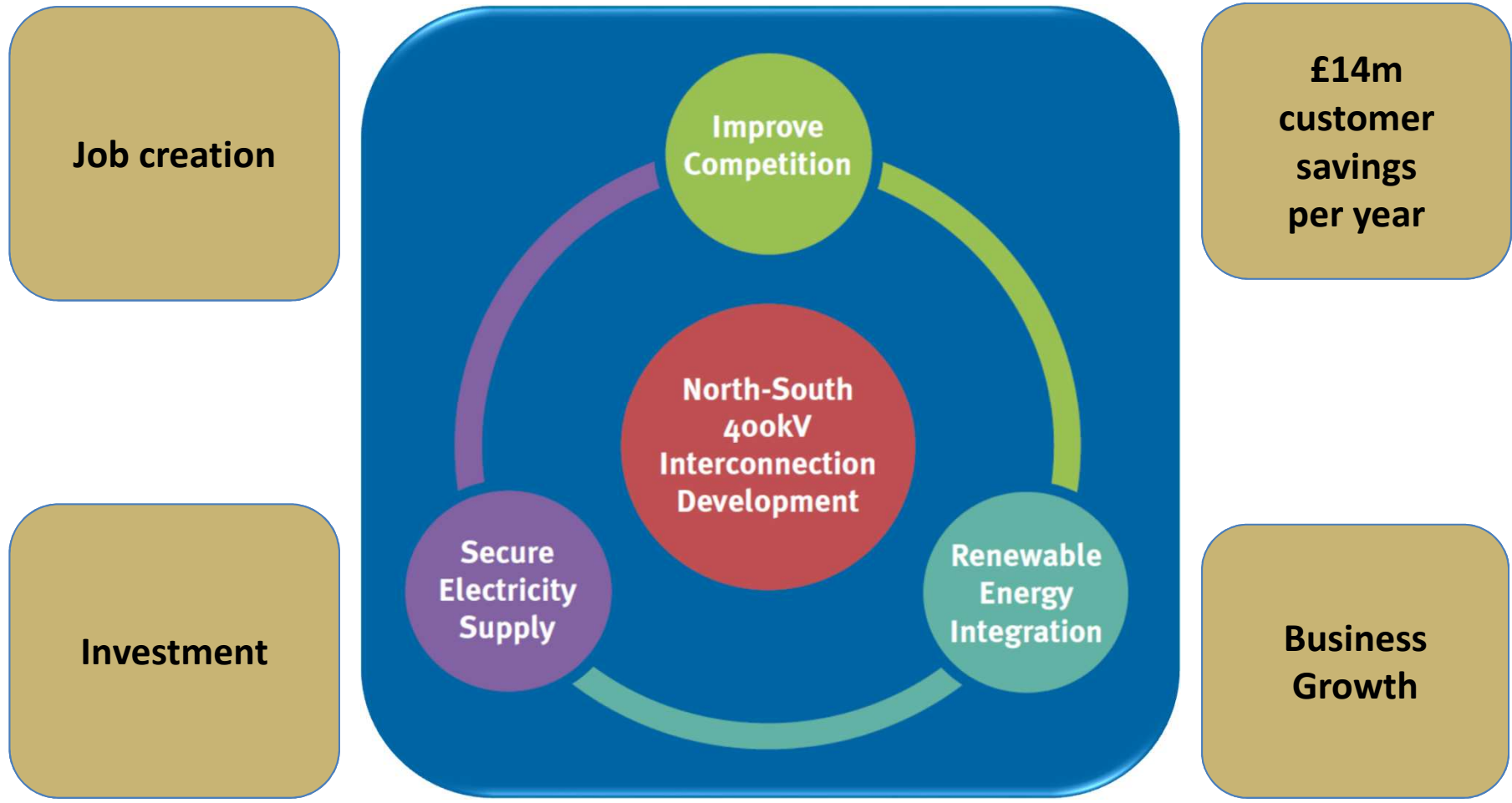
Security of Supply



Development of the North South Interconnector without further delay is vital



Importance to Northern Ireland



Current Status Of NSI Planning

- New application submitted by EirGrid to An Bord Pleanála in June 2015
- ES addendum submitted by SONI to DOE Planning in June 2015
- Planning Appeals Commission (PAC) now collating information required to recommence Public Inquiry
- Public Inquiry hearing expected to take place during Q1 2016 with a decision expected from the Environment Minister by year end
- Construction expected to be completed by Q4 2019



Summary

- **SONI will work closely with BCC officials and elected reps regarding current and future network development in the area**
- **NSI project is essential for security of supply and achieving consumer savings throughout Northern Ireland**
- **SONI would welcome support from BCC for the NSI once the Planning Appeals Commission recommences the Public Inquiry process**
- **BCC delegation welcome to visit SONI HQ and view the Command centre operation**
- **Any questions or issues please get in touch**



A woman with blonde hair tied back, wearing a patterned sweater, stands in a doorway and smiles warmly at the camera. The background is a softly lit dining room with a table and chairs, slightly out of focus.

Thank you

Any questions?

